



Setup Sheet

Driver: Teppo

Date: 20.9.2000

Track: _____

Indoor
 Outdoor

Smooth
 Rough

No Traction
 Slippery
 High-Bite

Tight / Open

FRONT SUSPENSION (Circle or Check the Appropriate Settings)

Toe In 0°
 Out

Ride Height Arms Below Level

Camber - 0.5°
 +

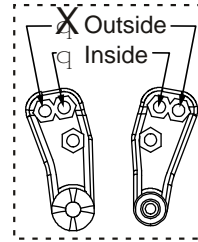
Caster Stock
 Other 30°

Sway Bar No
 Yes size _____

of washers under steering / tie-rod ball studs

Spindle ball stud: 2

Bellcrank ball stud: 0



of washers under ball stud
3

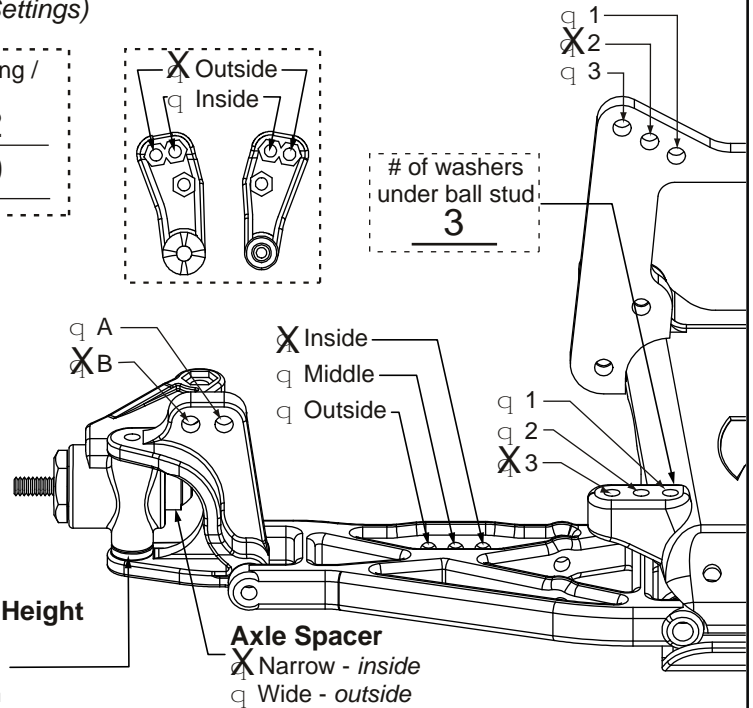
Front Shocks

Oil: 30 wt Losi

Piston: 57 Standard / Drilled

Spring: Orange

Limiters: Inside- .090" Outside- 0



REAR SUSPENSION

Toe-In Inside 3°
 Outside

Pivot Support 2 No Shim
 Shim Under Front
 Shim Under Rear > # of shims: Pivot plate raised by 1mm

Ride Height Bones Below level

Camber - 1/2°
 +

Drive Shafts Dogbones Aluminum
 CVDs Steel

Rear Hub Spacing Forward
 Center
 Rear

Outdrives Steel
 Plastic

Sway Bar No
 Yes size Usually faster w/0.055", Use it when track is smooth

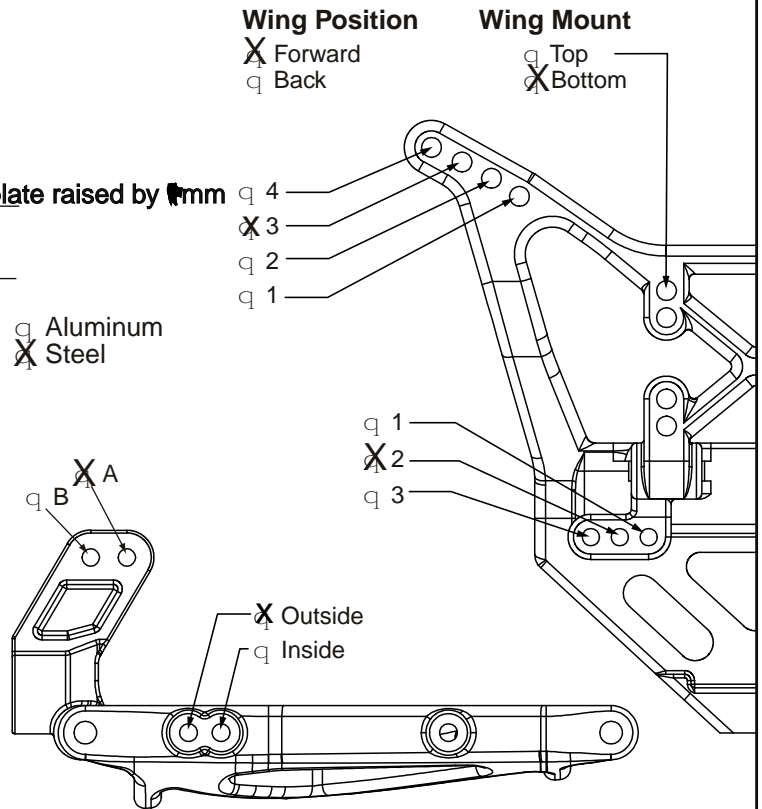
Rear Shocks

Oil: 25 wt Losi

Piston: 56 Standard / Drilled

Spring: Yellow

Limiters: Inside- 0 Outside- 0



Tires Front: A-7202 Wide body

Compound Pink

Foam Losi Firm full

Motor: LRP 13x2 Pinion/Spur: 22/78

Rear: A-7369 X-2000/BK

Compound Pink

Foam Trinity Firm

Battery Position: Forward

Notes: 2/4 oz. Weight in front bulkhead